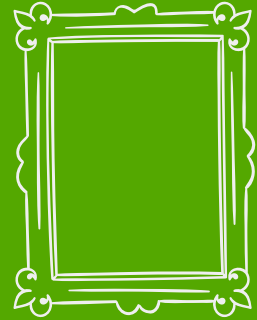


2023-2024



Art History Nature



PROGRAMS FOR STUDENTS K-12



THE
FRICK
PITTSBURGH



Booking: What you need to know

- **Book early!** Certain times of the year (like December and May) fill more quickly than others.
- Programs must be scheduled and finalized **at least** two months in advance; more is preferred.
- Lunchroom use and time is included in some programs. Look for the 🍎 icon. If lunch time is not part of your program, facilities may be available for \$30. Check when you book and remember to add 30 minutes to your visit.
- Not sure which program is best for you? Check out our new a la carte option or reach out - we are happy to help you customize a program to fit your needs!
- Only interested in touring one of our museums? Guided tours of the museum of your choice are available at a cost of \$10 per student.
- The earliest time that programs can begin is 9:30 a.m.
- Occasionally, certain programs may be temporarily unavailable due to special events, special exhibitions, or closures onsite.

Seasons at the Frick

Peak seasons: Clayton programs in December and May sell out quickly. Book early if you would like to take a field trip during these months!

Winter months: January and February offer more flexibility in available dates. Consider scheduling a program during this time to save \$2 per student.

Weather issues: If any weather-related delay or cancellation for your school district results in a field trip cancellation, we will do our best to reschedule! If that is not possible, you will receive a full refund.



As part of our continued commitment to keeping our staff and visitors safe, The Frick Pittsburgh has put the following policies in place:

AIR QUALITY AND OUTDOOR PROGRAMS

- If the Air Quality Index indicates Purple, or "Very Unhealthy" air quality, all outdoor programs will be canceled. We will do our best to reschedule, but if that is not possible, these programs will receive a full refund.
- If the air quality is not "Very Unhealthy," The Frick will defer to the school's policy on air quality guidance.

COVID-19 Mitigation

- For on-site school programs, the Frick will defer to each school's masking policy for their students. KN95 masks are available on-site by request.
- The Frick Pittsburgh follows the CDC's guidance for COVID-19 transmission levels in Allegheny County. If transmission levels in Allegheny County are designated as high at the time of a scheduled school program, we request that all students and chaperones wear masks when indoors at the Frick.

How to schedule your visit

Please note that space is limited, and we recommend that you contact us **at least two months** prior to your preferred field trip date.

To book a field trip, please [click this link](#) to fill out a virtual form. You will then be contacted by our staff within five business days.

Let us know

- **Your name, phone number, email address and school**
- **Date you would like to visit**
- **Which programs or museum spaces interest you**
- **Grade(s) and the total number of students and chaperones**

Have questions ? Contact us!

Email

Education@theFrickPittsburgh.org

or call 412-342-4087



"... The students had a great experience. It was fun for them and they were engaged. They also brought the experience back to the school and sparked interest among others who did not attend the trip."

Studio Response, Aliquippa High School, 9th-12th grade

Real art.

Real history.

Real learning.



The Frick Pittsburgh offers a range of hands-on learning programs for students K-12 and we are eager to work directly with you to customize tours and activities to best meet your classroom's needs. Frick programs address cross-curricular standards, integrating writing, art and science to broaden student perspectives. This digital booklet has everything you need to begin planning a rewarding and unforgettable experience for your students.



- 1** Clayton **2** The Frick Art Museum **3** The Car & Carriage Museum
4 The greenhouse **5** Bus parking **6** Education Center classrooms

Chaperone policy

Based on the size of your group, we admit a certain number of chaperones for free. For groups of students in grades K-2, we suggest a ratio of one chaperone to five students. For students in grades 3-12, we recommend a ratio of one chaperone to 8 students.

Chaperones should be prepared to assist as needed with student behavior, bathroom breaks, and general group management.

Bus parking

While our new parking lot is beautiful and accommodates many visitors, due to its layout it cannot accommodate buses, even to turn around. Luckily, street parking is free!

The day we expect your group, we will set out orange cones along the Reynolds St. sidewalk to reserve space for your bus.



à la carte field trip offerings

You can now build your own field trip!

Guided student tours of each museum start at \$10 per student, with fees of \$2 per student for each additional museum tour or activity. Special exhibitions add no cost to your visit!

Maximum of three museums or activities per field trip. Capacity limits vary depending on your selected number of activities and range between 8 - 90 students.

Museum tours:

- **Clayton** is the remarkable, original Gilded Age home of the Frick family, a one-of-a-kind tool for learning about life in 19th-century Pittsburgh. Recommended duration: 1 hour
- **The Frick Art Museum** displays a collection of art that belonged to the Frick family, as well as an ever-changing array of special exhibitions, this year including: **Vanessa German's "Reckoning: Grief and Light," Kirstie MacLeod's "The Red Dress,"** and **"Vermeer, Monet, Rembrandt: Forging the Frick Collections in Pittsburgh and New York."** Recommended duration: 45 minutes - 1 hour
- **The Car and Carriage Museum** illustrates the history of transportation from carriages to the early decades of the automobile, and hosts the exhibition **Pittsburgh and the Great Migration: Black Mobility and the Automobile** until February 4, 2024. Recommended duration: 45 minutes

Add-on activities:

- **Create art in our classrooms** with experienced art educators who will lead an artmaking activity designed to encourage both creativity and reflection of your students' museum experience. Recommended duration: 45 minutes - 1.5 hours
- During the **History Mystery activity**, students will use clues, a matching game, and the power of deduction to determine the purpose of Gilded Age tools! Recommended duration: 30 minutes - 45 minutes
- The **assembly-line activity** teaches students how an assembly line works -- through direct experience! Participants work together to assemble small toy cars, and can compete to see which groups work the fastest. Recommended duration: 30 minutes - 45 minutes

Readymade Program Offerings

A Tuneful Trip to The Frick (Pre K-2)

Songs and games introduce art, history, and just how much fun a museum can be!

Starting in March 2024, this program can include your choice of two of any of our three museums: The Frick Art Museum, The Car & Carriage Museum, or Clayton.

Group size: 8-35 students

Fee: \$12 per student

Duration: 2.5 hours



Studio Response (K-12)

Adaptable to any works within The Frick Art Museum, students discuss themes and art-making techniques in the gallery before heading to the classroom to create their own works of art.

Group size: 8-35 students; up to 50 students when the museum has a visiting exhibition

Fee: \$12 per student

Duration: 2.5 hours



The Chemistry of Color (2-5)

Combine art, science, history, and egg yolks! Students create tempera paint, learn about color and art history, and tour our Italian art collection.

Group size: 8-35 students

Fee: \$12 per student

Duration: 2.5 hours



Growing Up at Clayton (2-5)

Travel through history and compare daily life then and now as you tour Clayton! Hoop rolling is optional (weather permitting).

Group size: 8-35 students

Fee: \$10 per student

Duration: 1.5 hours



Program Key



Hands-on project



Greenhouse



Time for lunch included



Frick Art Museum



Clayton



Car & Carriage Museum

"The content of the program was aligned perfectly with our goals. Moreover, the program was interesting and slightly challenging so that students were actively engaged for the duration."

-Norwin Middle School, 7th - 9th grade

Art & History Unite (3-12)

Encounter the collections of our three museums in one visit through interactive activities tailored to each grade level.

Group size: 8-90 students

Fee: \$13 per student

Duration: 4 hours



Understanding Symbolism: Then and Now (4-9)

Students "read" visual clues in medieval paintings, explore symbolism in their lives, and craft a triptych to represent their own experiences.

Group size: 8-30 students

Fee: \$12 per student

Duration: 2.5 hours



Letterboxing: Geocaching, 19th-Century Style! (4-6)

This outdoor exploration combines problem-solving skills, cooperation, reading, and math in game learning! Teams read maps, decipher clues and sight along compass lines to find hidden letterboxes. Held rain or shine--dress for the weather.

Group size: 8-35

Fee: \$11 per student

Duration: 2 hours



Program Key



Hands-on project



Greenhouse



Time for lunch included



Frick Art Museum



Clayton



Car & Carriage Museum



Joie de Vivre: Art and Revolution in 18th Century France (9-12)

After studying 18th century art, furniture and design, students explore the dynamics of peasant and court life that led to the French Revolution. Choose the tour alone or add an extensive theater-based workshop!

Group size: 8-30 students

Fee: \$10 per student (tour only); \$12 per student for tour and workshop

Duration: 2 hours (tour) or 4 hours (tour and workshop), including lunch



Pittsburgh 1892: Industry, Society, and Conflict (8-12)

This interactive tour puts Henry Clay Frick into a broader national context, exploring how and why steel became dominant in Pittsburgh and how mass production affected the region.

Group size: 8-35 students

Fee: \$10 per student for tour; \$12 per student for tour and workshop

Duration: 1.5 hours (tour) or 2.5 hours (tour and workshop)



Program Key



Hands-on project



Greenhouse



Time for lunch included



Frick Art Museum



Clayton



Car & Carriage Museum

Field trip packages

Interested in coming to the museum more than once? Sign up for a field trip package to experience all The Frick has to offer in a series of visits throughout the school year!

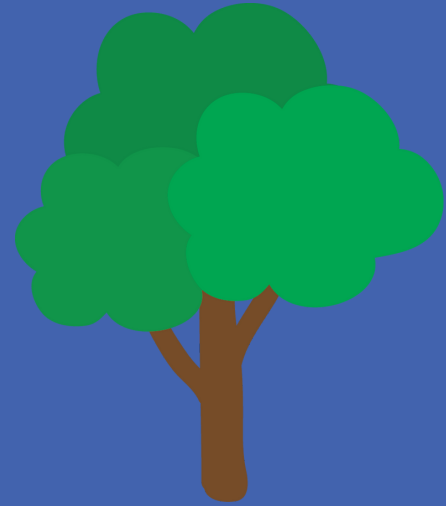
Learning Tree (1-3)

Learn how each of the four seasons impact the natural world through observation, hands-on activities, and more! Each participant will experience tours of our three museums throughout the year. Limited spots are available.

Group size: 8-60 students

Fee: \$32 per student for the whole year

Duration: 2.5 hours per visit; 4 visits throughout the school year (one per season)



SchMus (5-8)

Bring school to the museum in a series of field trips centered around creative writing. Students will tour each of our museums and accompanying special exhibitions throughout 6 field trips and will leave the program with a personalized journal.

Group size: 8-35 students

Fee: \$48 per student

Duration: 1.5 hours per visit; 6 visits total throughout the school year



Program Key



Hands-on project



Greenhouse



Time for lunch included



Frick Art Museum



Clayton



Car & Carriage Museum