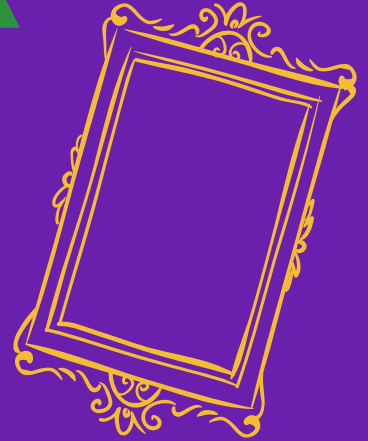


**2025-2026**

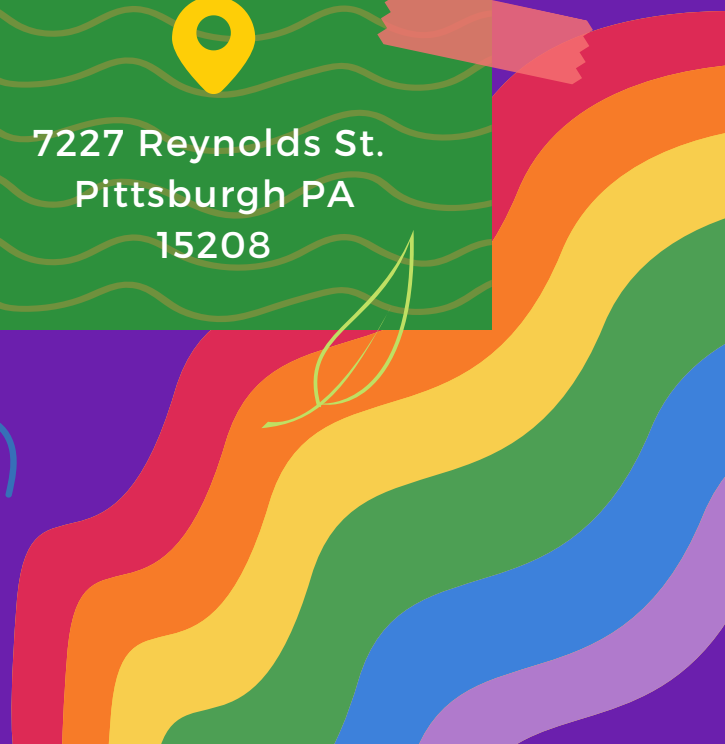


# **Art History Nature**

**PROGRAMS FOR STUDENTS  
K-12**



THE  
**FRICK**  
PITTSBURGH  
MUSEUMS & GARDENS





# Booking: What you need to know

- **Book early!** Certain times of the year (like October, December, and May) fill more quickly than others.
- Programs must be scheduled and finalized **at least** six weeks in advance; more is preferred.
- Lunchroom use and time is included in some longer programs. Look for the 🍎 icon. If lunch time is not part of your program, facilities may be available for \$30. Ask when you book and remember to add 30 minutes to your visit.
- Not sure which program is best for you? Check out the a la carte options or reach out. We are happy to help you customize a program to fit your needs!
- Only interested in touring one of our museums? Guided tours of the museum of your choice are available.
- The earliest time that a field trip can begin is 9:30 a.m.
- Occasionally, certain programs may be temporarily unavailable due to special events, traveling exhibitions, or onsite closures.

## Seasons at the Frick

**Peak seasons:** Clayton programs in October, December, and May sell out quickly. Book early if you would like to take a field trip during these months!



**Winter months:** January and February offer more flexibility in available dates. Consider scheduling a field trip during this time to save \$2 per student.



**Weather issues:** If any weather-related delay or cancellation for your school district results in a field trip cancellation, we will do our best to reschedule! If that isn't possible, you will receive a full refund.

**As part of our continued commitment to keeping our staff and visitors safe, The Frick Pittsburgh has put the following policies in place:**

## AIR QUALITY AND OUTDOOR PROGRAMS

- If the Air Quality Index indicates Purple, or "Very Unhealthy" air quality, all outdoor programs will be canceled. We will do our best to reschedule, but if that is not possible, these programs will receive a full refund.
- For air quality rating other than "Very Unhealthy," the Frick will defer to the school's policy on air quality guidance.

## HEALTH AND WELLNESS

- To help keep all visitors and staff safe, students who have a confirmed, contagious illness must remain at school or at home. The Frick will refund the cost of that student's ticket.
- Any student with visible symptoms of illness may be sent home or be asked to remain in a separate space; if their symptoms are believed to be caused by a non-contagious illness, Frick staff will provide a mask for that student to wear for the duration of their visit.
- Schools may request that the Frick's museum educators who work directly with their students wear face masks to protect students from illness.
- KN95 masks are available on-site by request.

# How to schedule your visit

Please note that space is limited, and we recommend that you contact us **at least six weeks** prior to your preferred field trip date.

To book a field trip, please [click this link](#) to fill out a virtual booking request. You will then be contacted by someone on the education team within \*five business days.

\*Response times may be longer close to holidays

## Let us know

- **Your name, contact information, and school**
- **Date you would like to visit**
- **The field trips or museums that interest you**
- **Grade(s) and the total number of students and chaperones**
- **Ways this field trip relates to your curriculum**
- **Accessibility requests**

## Have questions? Contact us!

Email

**Education@theFrickPittsburgh.org**

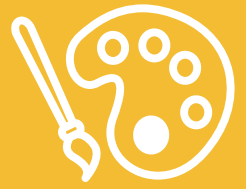
or call 412-342-4087



**Real art.**

**Real history.**

**Real learning.**



The Frick Pittsburgh offers a range of hands-on field trips for students K-12 and we are eager to work directly with you to customize tours and activities to best meet your classroom's needs. Frick field trips address cross-curricular standards, integrating writing, art and science to broaden student perspectives. This digital booklet has everything you need to begin planning a rewarding and unforgettable experience for your students.

## Site Map



- 1** Clayton    **2** The Frick Art Museum    **3** The Car & Carriage Museum  
**4** The greenhouse    **5** Bus parking    **6** Education Center classrooms

## Chaperone policy

Based on the size of your group, we admit a certain number of chaperones for free. Reach out for more detailed information regarding how many chaperones are included for your field trip package and grade level.

Any additional chaperones will be charged as participants at the student rate.

Chaperones should be prepared to assist as needed with student behavior, bathroom breaks, and general group management.

## Bus parking

While our parking lot is beautiful and has space for many visitors, it cannot accommodate buses, even to turn around. Luckily, street parking is free!

The day we expect your group, we will set out orange **Reserved Parking** signs along the Reynolds St. sidewalk to save a parking spot for your bus.



# à la carte field trip options

Build your own field trip! Each museum tour is adaptable based on factors like age, school curriculum, and student interest.

Maximum of three museums or activities per field trip. Capacity limits vary depending on your selected number of activities and range between 8 - 90 students.

## Museum tours:

- [Clayton](#) is the remarkable, original Gilded Age home of the Frick family, a one-of-a-kind tool for learning about life in 19th-century Pittsburgh.

- Our signature [Gilded, Not Golden](#) tour of Clayton, adapted from the award-winning public tour of the same name, explores 1892, a pivotal year for our nation, Pittsburgh, and the Frick family. Throughout this tour, students will look under the “gilded” surface of the late 19th century to reveal the era’s more complicated truths while thinking about how the Gilded Age continues to impact us today. This tour is available throughout the school year.
  - Recommended duration: 1.5 hours - 2 hours depending on age
  - Cost: \$12 per student

Content advisory: 1892 was a tumultuous year for the Frick family and the Pittsburgh steel industry. For this reason, tours of Clayton deal with potentially challenging subject matter, including discussions of violence, grief, and child loss.

- Enjoy a home decked out for the holidays on the [Clayton Holiday Tour](#), available from November 22 - January 4! During this special tour, students will learn about life during the Gilded Age while exploring how some beloved winter holiday traditions were celebrated during the this period.
  - Recommended duration: 1.5 hours
  - Cost: \$12 per student

“[It was a] great program for my AP US history students. Really impressed that the Frick put together a program to the rigor of my AP level students.”

- Oakland Catholic High School, 11th grade  
AP US history

# à la carte field trip options

## Museum tours:

- [The Frick Art Museum](#) displays a collection of art that belonged to the Frick family, as well as an ever-changing array of special exhibitions! Special exhibitions this school year include **The Scandinavian Home: Landscape and Lore** (on view from September 27 - January 11) and **Lewis Hine Pictures America** (on view from February 21 - May 17)!
  - Recommended duration: 1 hour
  - Cost: \$10 per student
- [The Car and Carriage Museum](#) houses the Frick's collection of historic carriages and cars dating back to the turn of the 20th century! On this tour, students will travel back to the time of horse-drawn carriages, see some of the first horseless carriages to have an impact on Pittsburgh, and learn how the development of the automobile came to be and how it changed American life.
  - Recommended duration: 1 hour
  - Cost: \$10 per student



# à la carte field trip options

## Add-on activities:

- [Create art in our classrooms](#) with experienced art educators who will lead artmaking designed to encourage both creativity and reflection of your students' museum experience. This pairs equally well with any museum tour!
  - Recommended duration: 45 minutes - 1 hour 30 minutes
  - Cost: \$4 per student
  - Appropriate for all ages
- During the [History Mystery activity](#), students will use clues, a matching game, and the power of deduction to determine the purpose of Gilded Age tools! This pairs best with a tour of Clayton.
  - Recommended duration: 30 minutes
  - Cost: \$2 per student
  - Most appropriate for students in grades 2-5
- The [assembly-line activity](#) teaches students how an assembly line works through direct experience! Participants work together to assemble small toy cars, and can compete to see which groups work the fastest. This pairs best with a tour of the Car & Carriage Museum.
  - Recommended duration: 30 minutes
  - Cost: \$2 per student
  - Most appropriate for students in grades 3-12
- [Capital Contest](#) teaches students about wealth distribution in capitalism through an interactive game! This pairs best with a Gilded, not Golden tour of Clayton.
  - Recommended duration: 30 minutes
  - Cost: \$2 per student
  - Most appropriate for students in grades 8-12

For the majority of our students, this was their first experience in a museum. The way that Frick is able to make the visit developmentally appropriate by incorporating songs and movement makes it more accessible to all of our young learners.

-Faison Elementary, Kindergarten

# Ready-made Program Offerings

## A Tuneful Trip to The Frick (Pre K-2)

Songs and games introduce art, history, and just how much fun a museum can be!

This program can include your choice of two out of any of our three museums: The Frick Art Museum, The Car & Carriage Museum, or Clayton.

**Group size:** 8-50 students

**Fee:** \$12 per student

**Duration:** 2.5 hours



## Studio Response (K-12)

Adaptable to any works within The Frick Art Museum, students discuss themes and art-making techniques in the gallery before heading to the classroom to create their own works of art.

**Group size:** 8-35 students; up to 50 students when the museum has a visiting exhibition

**Fee:** \$12 per student

**Duration:** 2.5 hours



## The Chemistry of Color (2-5)

Combine art, science, history, and egg yolks! Students create tempera paint, learn about color and art history, and tour our Italian art collection.

**Group size:** 8-35 students

**Fee:** \$14 per student

**Duration:** 2.5 hours



## Art & History Unite (3-12)

Encounter the collections of our three museums in one visit through interactive activities tailored to each grade level.

**Group size:** 8-90 students

**Fee:** \$14 per student

**Duration:** 4 hours



## Program Key



Hands-on project



Greenhouse



Time for lunch included



Frick Art Museum



Clayton



Car & Carriage Museum



"The content of the program was aligned perfectly with our goals. Moreover, the program was interesting and slightly challenging so that students were actively engaged for the duration."

-Norwin Middle School, 7th - 9th grade

### **Changes in America: The Assembly Line (4-5)**

Transportation is a perfect way to study the changes America experienced moving from handcrafted to manufactured objects at the turn of the last century. Student crews experience a moving assembly line as they race the clock to build cars.

**Group size:** 8-35 students

**Fee:** \$12 per student

**Duration:** 2.5 hours



### **Letterboxing: Geocaching, 19th-Century Style! (4-6)**

This outdoor exploration combines problem-solving skills, cooperation, reading, and math in game learning! Teams read maps, decipher clues and sight along compass lines to find hidden letterboxes. Held rain or shine--dress for the weather.

**Group size:** 8-35

**Fee:** \$12 per student

**Duration:** 2 hours



### **Understanding Symbolism: Then and Now (4-9)**

Students "read" visual clues in medieval paintings, explore symbolism in their lives, and craft a triptych to represent their own experiences.

**Group size:** 8-30 students

**Fee:** \$12 per student

**Duration:** 2.5 hours



The students all said that this was their best outing of the school year. They were telling other peers about all the cars. They thought the assembly line activity was cool and told others about it.

-Linton Middle School,  
grades 6-8

## **Program Key**



Hands-on project



Greenhouse



Time for lunch included



Frick Art Museum



Clayton



Car & Carriage Museum



### Art and Revolution in 18th Century France (9-12)

After studying 18th century art, furniture, and design, students explore the dynamics of peasant and court life that led to the French Revolution. Choose the tour alone or add an extensive theater-based workshop!

**Group size:** 8-30 students

**Fee:** \$10 per student (tour only); \$12 per student for tour and workshop

**Duration:** 2 hours (tour) or 4 hours (tour and workshop), including lunch



### Forging Capital: Power in Pittsburgh (9-12)

This interactive Gilded, Not Golden tour and accompanying workshop looks under the “gilded” surface of the late 19th century to reveal the era’s layered truths. Students will learn how Henry Frick and his contemporaries including Andrew Carnegie, Jane Grandison, and George Westinghouse impacted Pittsburgh during their time and today.

**Group size:** 8-35 students

**Fee:** \$15 per student

**Duration:** 3 hours



## Program Key



Hands-on activity



Greenhouse



Time for lunch included



Frick Art Museum



Clayton



Car & Carriage Museum

# Multi-visit packages

**Interested in coming to the museum more than once?** Sign up for a field trip package or reach out to create your own to experience all The Frick has to offer in a series of visits throughout the school year!



## SchMus (5-8)

Bring school to the museum in a series of field trips centered around creative writing. Students will tour each of our museums and accompanying special exhibitions throughout 6 field trips and will leave the program with a personalized journal!

**Group size:** 8-35 students

**Fee:** \$48 per student

**Duration:** 1.5 hours per visit; 6 visits total throughout the school year



## Program Key



Hands-on project



Greenhouse



Time for lunch included



Frick Art Museum



Clayton



Car & Carriage Museum